

24AF570C022 GS-27-T 27-Ton (2002)
General Assembly

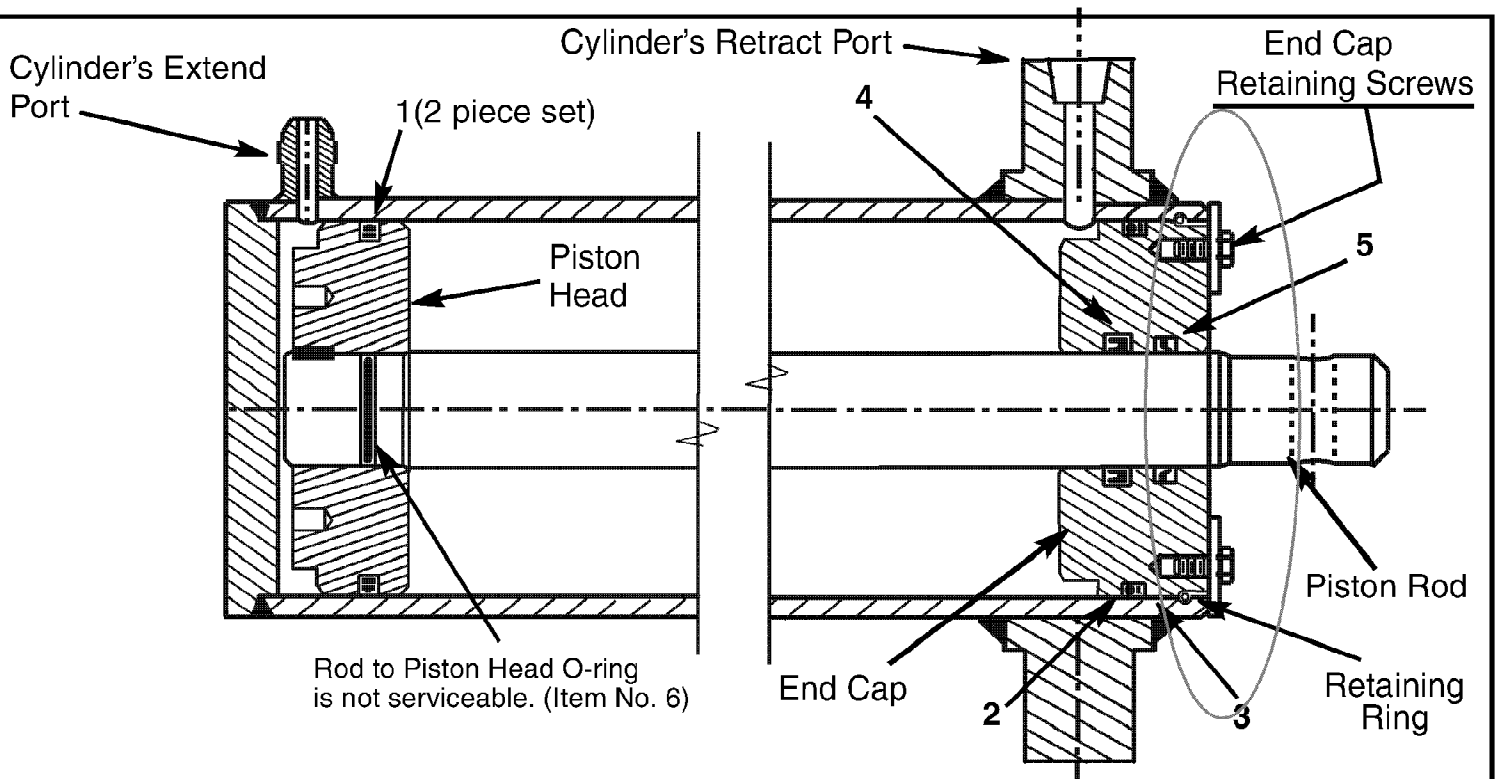
Page 2 of 7

Ref #	Part Number	Qty	S/P/F	Description
1	718-0769	1	S	Hydraulic Cylinder replace with 718-0769A
1	753-0563	1		Seal Kit 4.5" for Fisher Cylinder 718-0769 Fisher cylinders use a snap ring retainer system to secure the piston assembly into the cylinder.
1	718-0769A	1	S	Hydraulic Cylinder replaces 718-0769
1	953-05607	1	/P	Kit Seal 4.5" for XINGHUI cylinder 718-0769A See Service Kit 753-05607
1	953-05608	1	/P	Kit Seal 4.5" for ENERGY cylinder 718-0769A See Service Kit 753-05608
2	727-0634	1		Hydraulic Tube
3	710-1018	1	/P	Hex Cap Screw 1/2-20 x 2.75
4	737-0192	1	/P	90 Degree Solid Adapter
5	781-0526	1		Hose Guard
6	737-0153	1		Return Elbow
7	718-0481	1	S	Control Valve
8	781-0538	1	S	Hose Guard
9	710-0515	1		Hex Cap Screw 1/2-20 x 3.50
10	719-0550	1	S	Wedge Assembly
11	737-0238	1		Nipple Pipe 1/2-14
12	712-0239	1	S	Lock Nut 1/2-20
13	712-0711	1	/P	Hex Jam Nut 3/8-24
14	710-0459A	1	/P	Hex Cap Screw 3/8-24 x 1.5
15	781-0351	1	/P	Adjustable Gib
16	710-0604A	1	/P	Hex Washer Screw 5/16-18 x .625
17	781-1054	1	S	Support Bracket
18	681-0162	1	S	Beam Assembly
19	736-0300	1	S	Flat Washer .406 ID x .875 OD
20	710-0654A	1	/P	Hex Washer Screw 3/8-16 x 1.0
21	781-1048	1	S	Dislodger
22	781-0790	1	S	Back Plate
23	736-0921	1	S	Lock Washer 1/2
24	737-0312	1		Adapter 3/4-14
25	727-0443	1		Return Hose 3/4" ID x 44" Lg.
26	726-0132	1	/P	Hose Clamp 5/8"
27	737-0316	1	/P	Filter Housing
28	731-2496	1		Fender
29	710-1238	1	/P	Hex Washer Screw 5/16-18 x .875
30	712-3010	1	S	Hex Nut 5/16-18
31	736-0119	1	S	Lock Washer 5/16
32	781-1024	1	S	Fender Mounting Bracket
33	723-0405	1	/P	Oil Filter
34	710-0376	1	/P	Hex Cap Screw 5/16-18 x 1.0
35	681-0164	1	S	Light Bracket LH
36	625-0062	1		Taillight
36	725-2058	1		RH Taillight Assembly Not shown
36	725-2059	1		LH Taillight Assembly Not shown
36	725-2060	1		Wiring Harness Not shown
37	711-1587	1		Clevis Pin
38	736-0116	1	S	Flat Washer .635 ID x .93 OD
39	714-0470	1	S	Cotter Pin

24AF570C022 GS-27-T 27-Ton (2002)
General Assembly

Page 3 of 7

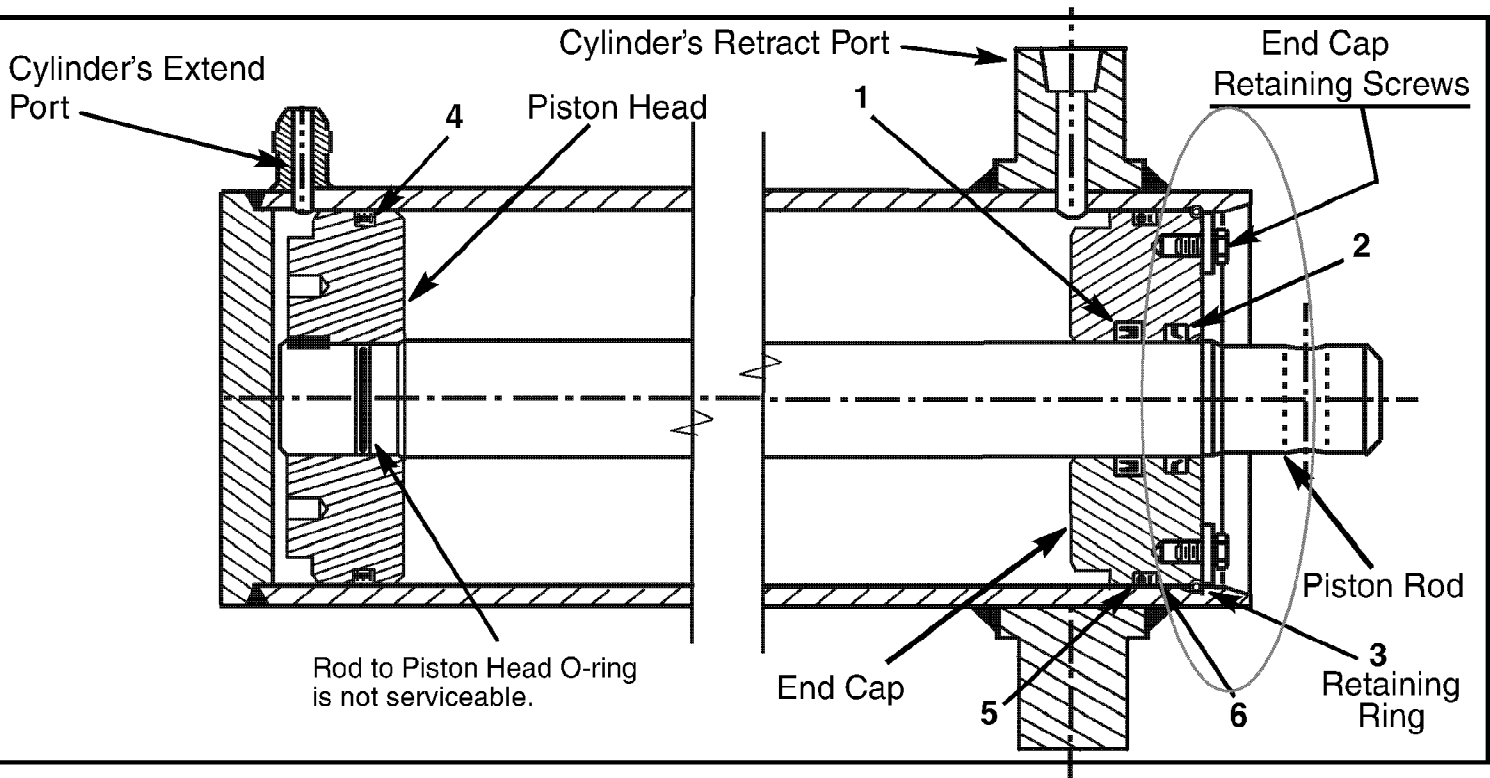
Ref #	Part Number	Qty	S/P/F	Description
40	781-1027	1	S	Light Bracket RH
41	710-3097	1		Carriage Bolt 3/8-16 x 1.0
42	712-0431	1	S	Flanged Lock Nut 3/8-16
43	781-0682	1	S	Log Tray
44	781-0686	1	S	Log Tray Bracket
45	681-0161	1	S	Frame Assembly
46	726-0214	1	/P	Push Cap
47	732-0583	1		Compression Spring
48	710-0521	1	/P	Hex Bolt 3/8-16 x 3"
49	781-0690	1		Lock Rod
50	737-0348	1	S	Vented Dipstick
51	710-1338	1	/P	Hex Screw 5/16-24 x 3.25
52	710-0654A	1	/P	Hex Washer Screw 3/8-16 x 1.0
53	634-0186	1	/P	Wheel Assembly
53	634-0188	1	/P	Rim Assembly (Oyster Gray) Not shown
53	741-0987	1	S	Bearing Cone Not shown
53	721-0168	1	S	Bearing Seal Not shown
54	712-0359	1	/P	Slotted Nut 3/4-16
55	714-0162	1	/P	Cotter Pin
56	734-0873	1		Hub Cap
57	719-0353	1		Coupling Shield
58	714-0122	1	S	Square Key 3/16" x .75
59	718-0686	1	S	Flexible Coupling
60	712-0123	1	/P	Hex Nut 5/16-24
61	736-0119	1	S	Lock Washer 5/16" ID
62	781-0097	1	S	Rear Coupling Support
63	727-0633	1		Hose
64	718-0683	1	S	Gear Pump (11gpm)
65	737-0329	1		45 Degree Elbow
66	727-0502	1		High Pressure Hydraulic Hose
67	781-0788	1		Tube Assembly
68	747-1261	1		Latch Rod
69	781-1045	1		Latch
70	715-0120	1	S	Spiral Pin
71	732-3127	1	S	Spring Compression
72	736-0169	1	S	L-Washer 3/8"
73	712-0798	1	/P	Hex Nut 3/8-16
74	710-0944	1	/P	Hex Cap Screw 3/8-16 x 4.25
75	736-0262	1	/P	Flat Washer .385 ID x .870 OD
76	713-0433	1	S	Chain
77	750-0497	1		Spacer .375 ID x .625 OD
78	727-0311	1		Coupling Hitch
79	712-0375	1	/P	Hex Lock Nut 3/8-16
80	711-0813	1	S	Clevis Pin
81	736-0185	1	S	Flat Washer .375 ID x .738 OD
82	732-0194	1		Spring Pin
83	781-0789	1		Jack Stand
84	736-0351	1	S	Flat Washer .760 ID x .500 OD



24AF570C022 GS-27-T 27-Ton (2002)
Service Kit 753-05607

Page 5 of 7

Ref #	Part Number	Qty	S/P/F	Description
1	N/A	1		Piston Seal: 2 piece set (White outer ring w/ black flat under ring) Not Available Separately
2	N/A	1		O-ring (Large, Black) Not Available Separately
3	N/A	1		Backup Ring (Black) Not Available Separately
4	N/A	1		Rod-Guide U-Cup (Dark Blue) Not Available Separately
5	N/A	1		Scraper: Rod (Black) Not Available Separately
6	N/A	1		O-ring (Small, Black) NOT USED Not Available Separately
7	N/A	1		INSTRUCTION SHEET Not Available Separately



Ref #	Part Number	Qty	S/P/F	Description
1	N/A	1		Zurcon U-Cup RU3 (Blue) Not Available Separately
2	N/A	1		Scraper DA17 (Black) Not Available Separately
3	N/A	1		Retaining-Ring (Metal) Not Available Separately
4	N/A	1		Zurcon Wynseal (Blue) Not Available Separately
5	N/A	1		O-Ring (Black) Not Available Separately
6	N/A	1		Back-up Ring (White) Not Available Separately
7	N/A	1		INSTRUCTION SHEET Not Available Separately